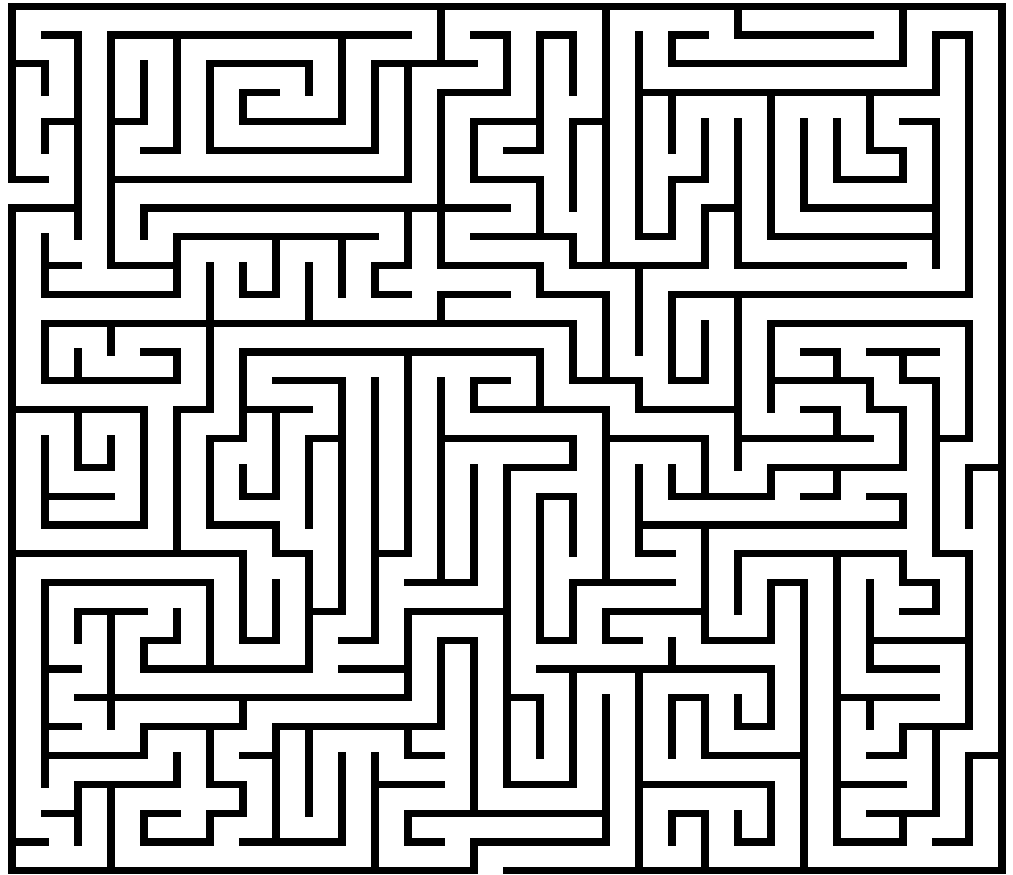
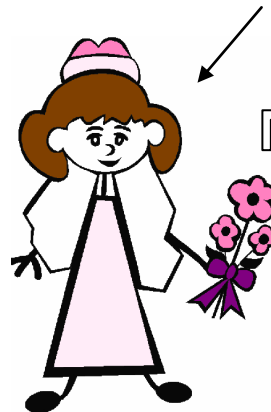


Parshat Chayei Sarah Maze Challenge

Parshat Chayei Sarah begins with the death of Sarah and ends with death of Abraham. In between, Abraham buys the Cave of the Patriarchs and sends his servant on a journey back to Charan and sends his servant on a journey back to Charan to find a bride for Isaac.



HELP
ABRAHAM'S
SERVANT FIND
A BRIDE FOR
ISAAC!



MAZAL TOV!